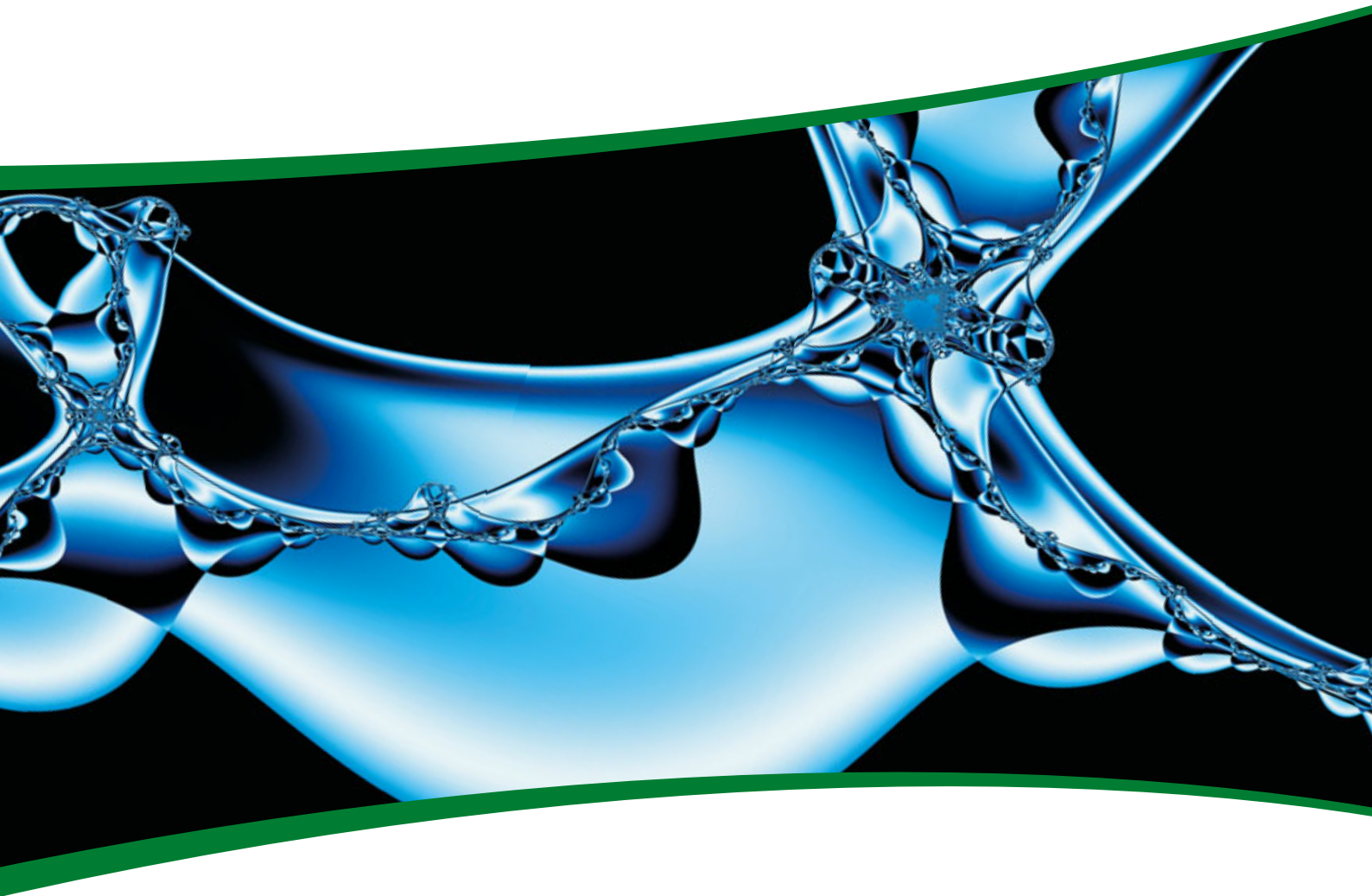




varisco[®]
solid pumping solutions



PUMPS AND PUMPING SYSTEMS



Varisco S.r.l. has a clear mission: design, production and sale of pumps for industry and firefighting.

Established in 1932 as an individual enterprise, the company began its pump production in 1948. Today the name Varisco is known around the world for high quality pump design and manufacturing. The success obtained in a highly competitive market is the result of our teamwork, creating synergy between in-house and outsourced resources, innovation, which allows us to anticipate the requirements of a constantly evolving market, and of our ability to provide services, assisting our clients in the choice and during the installation of our pumps made to solve their specific problems. The people who work for the company are its greatest resource. Varisco can rely on a team made up of experienced business people who support new enthusiastic and professional employees.

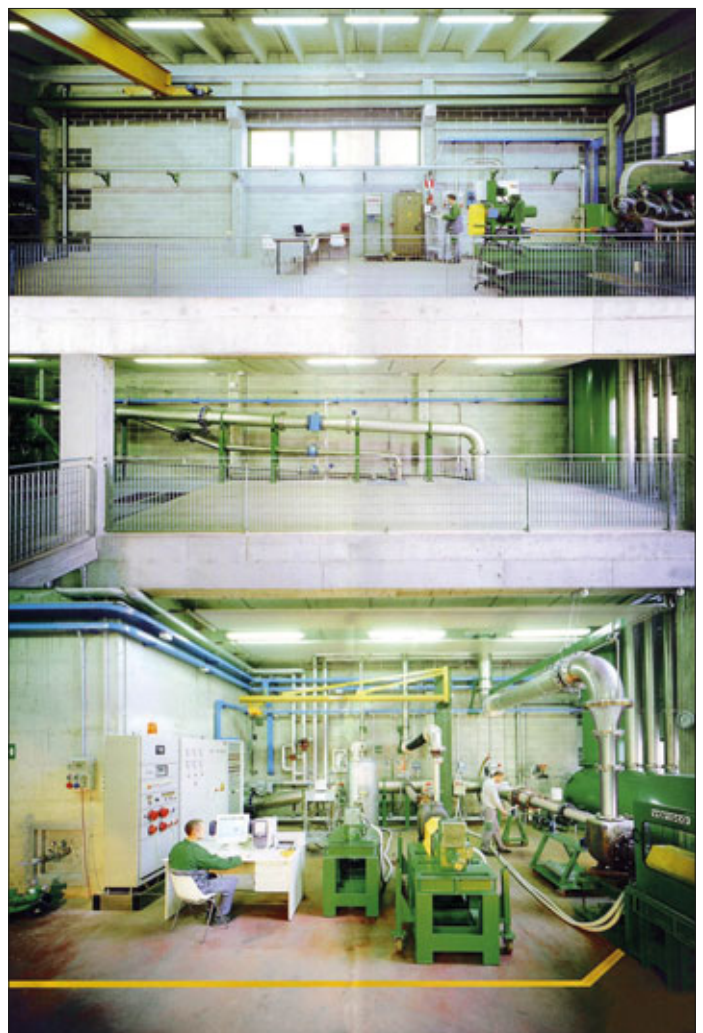
The Varisco Research and Development Center

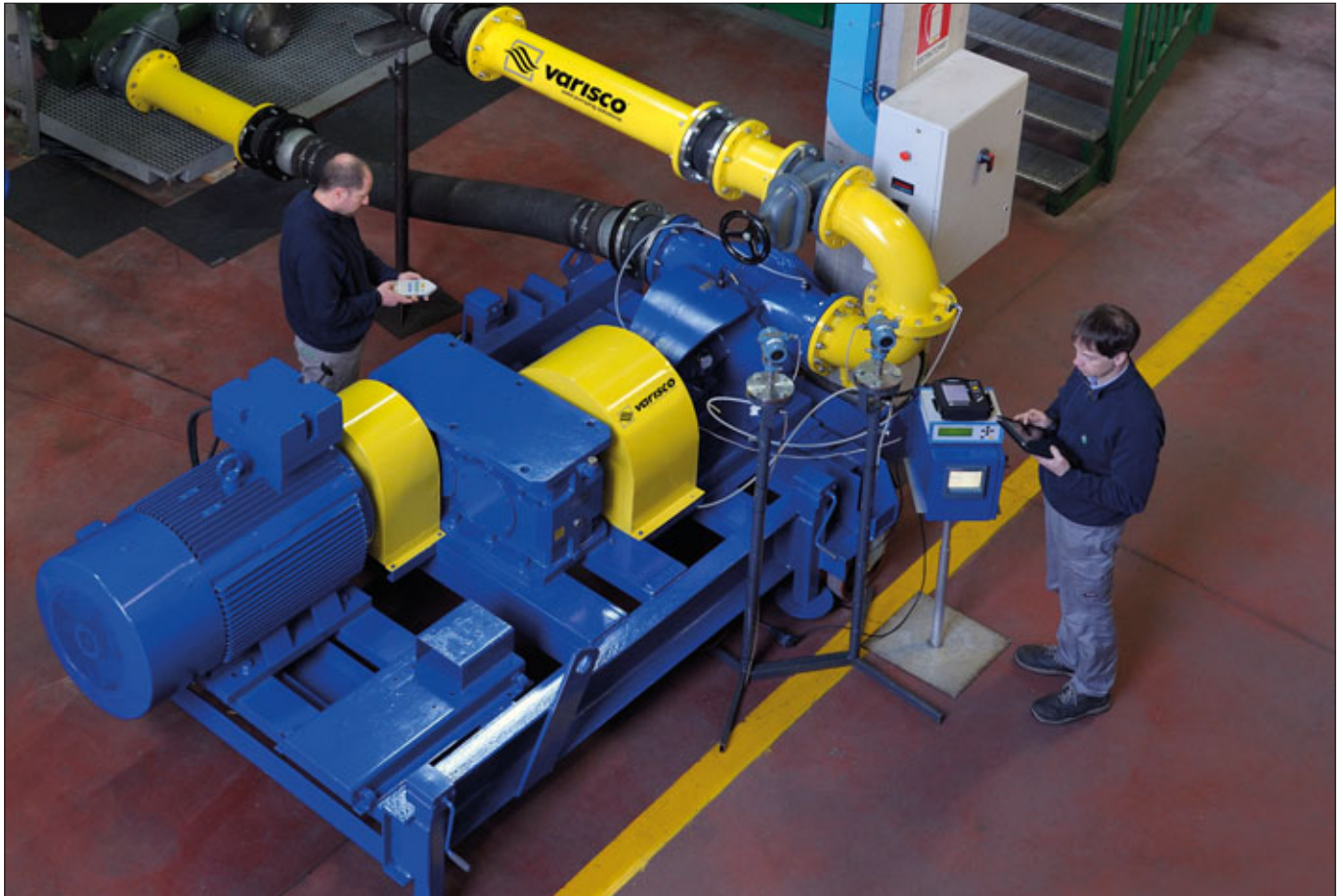
Innovation does not consist of brilliant ideas alone: laboratory and in-field tests are also required to develop our products. Varisco has invested considerable resources to keep its leadership in the field of pumping technology and in the year 2000 made a special three-floor Research and Development Center located next to the factory. The core of the R&D Centre is the laboratory for testing pumps, which is divided into two areas: water for rotodynamic pumps and oil for volumetric pumps.

The water area consists of three fully automated stations with DC current motors, to accurately control the rotational speed, and a vertical system, more than 10 m high, to test the priming and the NPSH of the 1" to 12" pumps.

A state-of-the-art data acquisition system allows the results to be immediately available in order to obtain a detailed analysis.

The oil area can house 1" to 10" pumps. The oil is contained in four tanks with a refrigeration system to maintain the viscosity constant during the test. The viscosity ranges from 5 to 300 cSt.





POSITIVE DISPLACEMENT PUMPS	V	Saxmag V	G	LB	Vulcan
	3	3	4	5	6
FIREFIGHTING UNITS	Argo				
	7				
CENTRIFUGAL PUMPS	J	ST-R			
	8	9			
SUBMERSIBLE PUMPS	Titan	Black			
	10	11			





EP V 30-2 ATEX

V Positive displacement internal gear pumps

Positive displacement internal gear pumps for pumping liquids with any kind of viscosity, even with abrasive particles but, not containing solids. They are used in industrial plants.

- Constant capacity, directly proportional to the rotational speed and virtually independent of pressure
- Smooth flow, without pulsations or pressure peaks which could cause vibrations in the pipework
- Rugged, heavy duty construction. Low rotor peripheral speed
- Wide range of materials: ductile iron, WCB steel, AISI 316 stainless steel
- Versions: ATEX and API 676
- Viscosity: from 20 to 100,000 [mm²/s - cSt]
- Temperature of the liquid: 200°C max (HT version: 300°C)

V - Positive displacement pumps

Model	Ports		Capacity m ³ /h (max)	Pressure bar (max)	Speed rpm (max)	Ductile iron		Stainless steel	
						Port position		Port position	
	mm	in				90°	180° (L)	90°	180° (L)
V 6	15	½"	0,48	20	1750		•		•
V 12	15	½"	0,9	20	1750		•		•
V 20	40	1¼"	2,2	20	1750		•		•
V 25	40	1¼"	3,8	20	1750		•		•
V 25-2	40	1¼"	4,5	16	1750	•	•	•	
V 30-2	40	1¼"	8,4	16	1750	•	•	•	
V 50-3	50	2"	15,6	16	1150	•	•	•	
V 60-2	50	2"	22	16	720	•	•		•
V 70-2	80	3"	28	16	600	•	•		•
V 80-2	80	3"	42	16	600	•	•		•
V 85-2	100	4"	54	12	600	•			
V 90-2	100	4"	54	12	425	•	•	•	
V 100-2	100	4"	78	12	425	•	•	•	
V 120-2	125	5"	117	8	320	•			
V 151	150	6"	117	8	320			•	
V 150-2	150	6"	144	8	320	•			
V 180	200	8"	170	10	240		•		•
V 200	200	8"	240	8	240		•		•
V 250	250	10"	350	8	200		•		•

(L): in line ports



SAXMAG VE 30-2 ATEX



Magnetic drive pumps

The SAXMAG V system, thanks to the static seal, allows power to be transmitted without contact and with absolutely no leaks. The SAXMAG magnetic drive is used in industrial plants for pumping inflammable, explosive, polymerising liquids.

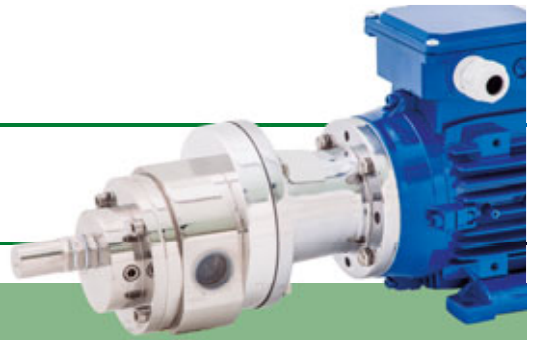
Advantages: high torque transmission, high operating temperature limit: 200°C, compliance with ATEX standards.

- High torque transmission
- High operating temperature limit: 200°C
- Compliance with ATEX standards

SAXMAG V

Model	Ports	
	mm	in
V 25-2	40	1¼"
V 30-2	40	1¼"
V 50-3	50	2"
V 60-2	50	2"
V 70-2	80	3"
V 80-2	80	3"
V 85-2	100	4"
V 100-2	100	4"

G Positive displacement external gear pumps



Dosing and Transfer Pump - GS / GK Series

Suitable for pumping liquids with a viscosity from 1 to 100.000 mPas. In case of medium or high viscosity fluids they can operate as a dosing pump through a variable speed drive.

Data	
Flow	max. 60.000 l/h
Pressure	max. 15 bar
Temperature	max. 200° C
Material	EN GJL-250 cast iron, EN GJS-500 ductile iron, AISI 316L stainless steel, Hastelloy C, Titanium, Bronze
Seal	Packed gland Single mechanical seal Magnetic coupling
Viscosity	1 - 100.000 mPas



GN Series Pumps

Suitable for applications in sectors like chemicals, pharma, cosmetics, food, textile, and general industry.
Pumped fluids: Additives, Acetone, Gasoline, Chocolate, Butter, Fruit Juice, Kerosene, Solvents, Shampooing, Inks.

Data	
Flow	0,5 - 90.000 l/h
Pressure	max. 20 bar
Temperature	40°C / +250°C
Material	AISI 316L stainless steel, Hastelloy C, Titanium, PTFE, PVDF
Seal	Single mechanical seal Magnetic coupling
Viscosity	0,2 - 150.000 mPas



GW Series Pumps

Suitable for transfer and dosing of low lubricant fluids at very low viscosity from 0,2 mPas

- Dosing of fluids to fill tanks in chemical / cosmetics / pharmaceutical / food industries
- Water spraying

Data	
Flow	11 - 480 l/h
Pressure	max. 15 bar
Temperature	-40°C / +200°C
Material	EN GJL-250 cast iron, AISI 316L stainless steel, Bronze
Seal	Single mechanical seal Magnetic coupling
Viscosity	0,2 - 10.000 mPas

GS - GK - GN - GW

Model	Ports		Capacity m ³ /h (max)	Pressure bar (max)	Model	Ports		Capacity m ³ /h (max)	Pressure bar (max)
	mm	in				mm	in		
GS 4	20	3/4"	0,34	15	GN 2	7	1/4"	0,15	15
GS 8	20	3/4"	0,68	15	GN 3	15	1/2"	0,21	15
GS 12	20	3/4"	1	15	GN 8	15	1/2"	0,65	15
GS 17	20	3/4"	1,4	15	GN 10	20	3/4"	0,87	15
GS 34	25	1"	2,9	15	GN 17	20	3/4"	1,45	15
GS 48	25	1"	4	15	GN 30	25	1"	2,5	15
GS 83	50	2"	6,9	15	GN 49	40	1 1/4"	4,1	15
GS 120	50	2"	10	15	GN 78	40	1 1/4"	6,5	15
GS 157	50	2"	13	15	GN 98	40	1 1/4"	8,2	15
GS 231	50	2"	19	10	GN 150	50	2"	12,6	15
GS 234	65	2 1/2"	19,5	15	GN 208	50	2"	17,4	15
GS 316	65	2 1/2"	26	15	GN 276	50	2"	23,1	15
GS 386	65	2 1/2"	32	15	GN 555	80	3"	46,6	15
GS 466	80	3"	39	15	GN 740	80	3"	62,1	15
GS 621	80	3"	52	15	GN 1184	100	4"	99,3	15
GS 772	80	3"	64,8	15	GW 2	10	3/8"	0,14	15
GS 1184	100	4"	103	10	GW 3	10	3/8"	0,27	15
GK 4	20	3/4"	0,34	15	GW 6	10	3/8"	0,51	10
GK 8	20	3/4"	0,68	15					
GK 12	20	3/4"	1	15					
GK 17	20	3/4"	1,4	15					
GK 34	25	1"	2,9	15					
GK 48	25	1"	4	15					
GK 83	50	2"	6,9	15					
GK 120	50	2"	10	15					
GK 157	50	2"	13	15					

LB

Self-priming diaphragm pumps



Self-priming mechanical diaphragm pumps for dense liquids that contain abrasives and solids in suspension. They are used in industrial and construction sectors.

- Rapid dry self-priming down to 6 m in a few seconds
- Can run dry indefinitely
- High abrasion resistance
- Passage of large diameter solids

Model	Gear box rapp./ratio: 1	Ports		Solids mm	Capacity			Head m (max)	Speed rpm	Strokes / min	Power kW
		mm	in		l/s	l/min	m ³ /h				
LB 80	43	80	3"	50	3,5	210	12,6	15	2900	68	2,2
					1,8	105	6,5				
					1,2	70	4,3				
LB 80V	38	80	3"	50	1,9	115	6,9	15	1450	38	1,5
					1,3	77	4,6				
					1,0	57	3,6				
LB 80V2	28	80	3"	50	2,6	155	9,3	15	1450	51	1,5
					1,8	105	6,5				
					1,3	77	4,6				
LB 1 - 4"	31	100	4"	60	7,6	467	28,0	15	1450	47	3
					5,3	317	19,0				
					4,2	250	15,0				
LB 2 - 6"	30,2	125	5"	60	11,7	700	42,0	15	1450	48	5,5
					8,4	500	30,0				

VULCAN

Progressive cavity screw pumps

Progressive cavity screw pumps for liquids with any kind of viscosity that contain abrasives and a high percentage of solids. They are used in industrial plants.

- Constant capacity, directly proportional to the rotational speed and quite independent of pressure
- Smooth flow, without pulsations or pressure peaks which could cause vibrations in the pipework
- Viscosity up to 1,000,000 [cPs]
- Liquid temperature: 180°C max
- ATEX version

Model	Stages	Capacity	Pressure	Speed	Model	Stages	Capacity	Pressure	Speed
	n°	m³/h	bar	rpm (max)		n°	m³/h	bar	rpm (max)
VULCAN 12-0.1	2	0,1	12	1000	VULCAN 04-034	1	34	4	700
VULCAN 24-0.1	4	0,1	24	1000	VULCAN 06-028	1	28	6	700
VULCAN 12-0.2	2	0,2	12	1000	VULCAN 08-017	2	17	8	600
VULCAN 06-001	1	1	6	1000	VULCAN 12-014	2	14	12	600
VULCAN 12-001	2	1	12	1000	VULCAN 24-007	4	7	24	500
VULCAN 06-002	1	2	6	1000	VULCAN 48-003	8	3	48	400
VULCAN 12-002	2	2	12	1000	VULCAN 04-064	1	64	4	500
VULCAN 24-002	4	2	24	1000	VULCAN 06-044	1	44	6	500
VULCAN 06-003	1	3	6	1000	VULCAN 08-032	2	32	8	500
VULCAN 06-005	1	5	6	1000	VULCAN 12-022	2	22	12	500
VULCAN 12-005	2	5	12	1000	VULCAN 24-010	4	10	24	400
VULCAN 24-005	4	5	24	1000	VULCAN 48-005	8	5	48	300
VULCAN 06-006	1	6	6	1000	VULCAN 04-110	1	110	4	400
VULCAN 12-003	2	3	12	1000	VULCAN 06-076	1	76	6	400
VULCAN 24-001	4	1	24	1000	VULCAN 08-055	2	55	8	400
VULCAN 06-012	1	12	6	1000	VULCAN 12-038	2	38	12	400
VULCAN 12-006	2	6	12	1000	VULCAN 24-019	4	19	24	400
VULCAN 24-003	4	3	24	800	VULCAN 48-010	8	10	48	300
VULCAN 48-001	8	1	48	800	VULCAN 06-115	1	115	6	350
VULCAN 04-024	1	24	4	800	VULCAN 12-120	2	120	12	350
VULCAN 06-016	1	16	6	800	VULCAN 06-210	1	210	6	300
VULCAN 08-012	2	12	8	800	VULCAN 12-210	2	210	12	300
VULCAN 12-008	2	8	12	800	VULCAN 06-240	1	240	6	300
VULCAN 24-004	4	4	24	800	VULCAN 06-400	1	400	6	300
VULCAN 48-002	8	2	48	600					



VULCAN E48-010

ARGO

Firefighting units

Firefighting units in conformity with EN 12845 standards for sprinkler and hydrants. Arrangement with one or two electrically-driven or engine-driven pumps, complete with jockey pump. VISION: special firefighting applications.

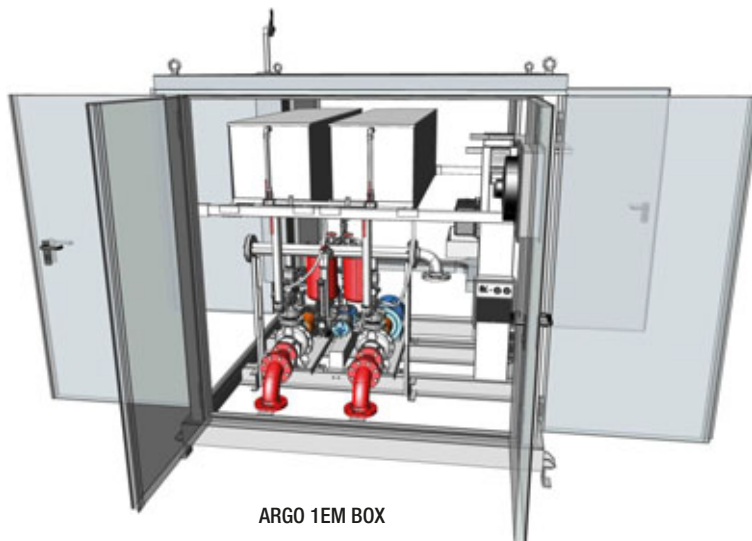
- End-suction back pull-out pumps with spacer coupling
- Components and accessories manufactured in full compliance with the EN 12845 standards
- Diesel engine with heat exchanger available on many models

Model	Capacity [m³/h]	Head [kW]	P _{2n} (E) [kW]	P (M) [kW]
ARGO 32-200	27	70	4 ... 7,5	4,6 ... 7,8
ARGO 32-250	23	92	11 ... 15	14,9
ARGO 40-200	45	72	9,2 ... 15	14,9
ARGO 40-250	43	91	15 ... 18,5	14,9 ... 18,8
ARGO 50-200	132	67	15 ... 22	14,9 ... 28,6
ARGO 50-250	96	102	22 ... 37	28,6 ... 35
ARGO 65-200	138	67	15 ... 30	18,8 ... 28,6
ARGO 65-250	144	100	37 ... 45	35 ... 53
ARGO 80-200	228	67	30 ... 45	28,6 ... 53
ARGO 80-250	210	93	45 ... 75	53 ... 73,5
ARGO 100-200	300	80	37 ... 55	35 ... 53
ARGO 100-250	312	100	55 ... 110	53 ... 145
ARGO 125-250	600	105	90 ... 160	110 ... 164

(E): electric motor
(M): diesel engine



ARGO 1EM



ARGO 1EM BOX



J

Self-priming centrifugal pumps

JX 1-110 BASE

JS 3-240

Self-priming centrifugal pumps, ideal for pumping liquids with solids in suspension. They are for applications where the main feature is the difficulty in priming and are used in industrial, construction and emergency sectors.

- Rapid self-priming without foot valve. Once filled with water, the pump is automatically primed to a height of 7.5 m
- Semi-open impeller allowing the passage of large diameter solids, easy to inspect
- High resistance to abrasive liquids: turbid, muddy, sandy waters with solids in suspension
- Easy to install: only the suction pipe needs to be immersed in the liquid. The pump can be located above and in a dry place, in the most suitable location for service and control
- Wide range of materials: cast iron, bronze, AISI 316 stainless steel
- Compliance with ATEX standards

Electrically-driven pumps

Model	Ports		Solids mm	50 Hz								60 Hz							
	mm	in		Capacity m³/h			Head m			Speed rpm	Power kW	Capacity m³/h			Head m			Speed rpm	Power kW
J 1-110	40	1½"	20	22	15	5	5,5	11	15	2900	1,1	24	15	5	5	18	21,5	3450	2,2
J 1-160	40	1½"	8	20	12	5	10	24	27	2900	2,2	21	13	5	12	35	39	3450	4
J 1-180	40	1½"	11	25	15	6	22	32	34	2900	4	25	15	6	34	48	48	3450	5,5
J 2-100	50	2"	17	30	20	8	2	8	13	2900	1,1	32	20	8	5	13	18	3450	2,2
J 2-120	50	2"	25	44	30	10	5	12	18	2900	2,2	48	30	10	9,5	20	25	3450	4
J 2-170	50	2"	13	44	30	10	14	22	31	2900	4	48	30	10	22	37	47	3450	7,5
J 2-180	50	2"	15	50	30	10	20	30	34	2900	5,5	50	30	10	34	44	48	3450	11
J 2-215	50	2"	14	46	25	10	42	52	57	2900	11	46	25	10	66	76	82	3450	18,5
J 2-220	50	2"	12	42	28	10	42	52	58	2900	11	-	-	-	-	-	-	-	-
J 3-100	80	3"	25	60	37	15	4	9	12	2900	2,2	70	43	15	5	13	17	3450	3
J 3-140	80	3"	28	70	40	20	13	18	20	2900	4	70	40	20	21	26	28,5	3450	7,5
J 3-180	80	3"	27	85	50	20	18	29	34	2900	7,5	85	50	20	34	45	48	3450	15
J 3-225	80	3"	23	80	50	20	40	48	53	2900	15	-	-	-	-	-	-	-	-
J 3-240	80	3"	14	80	40	20	32	60	64	2900	18,5	80	40	20	64	86	90	3450	30
J 3-250	80	3"	12	65	42	15	45	60	67	2900	18,5	-	-	-	-	-	-	-	-
J 3-252	80	3"	14	95	60	20	51	65	72	2900	22	95	60	20	80	95	103	3450	37
J 3-305	80	3"	20	105	70	30	96	106	108	2900	55	-	-	-	-	-	-	-	-
J 4-100	100	4"	38	100	65	25	5	9	13	2900	4	120	75	30	6	14	18	3450	7,5
J 4-159	100	4"	45	150	100	40	20	23	26	2900	15	-	-	-	-	-	-	-	-
J 4-160	100	4"	45	150	100	40	12	22	24	2900	11	-	-	-	-	-	-	-	-
J 4-225	100	4"	35	150	100	50	32	42	46	2900	22	-	-	-	-	-	-	-	-
J 3-210	80	3"	40	80	45	20	7	13	15	1450	4	90	45	20	12	19,5	22	1750	7,5
J 4-220	100	4"	45	130	100	50	6	10	14	1450	5,5	160	100	40	8	17	20	1750	7,5
J 4-250	100	4"	50	160	100	40	5	13	18	1450	7,5	160	100	40	11	22	26,5	1750	15
J 4-316	100	4"	38	180	110	60	16	26	29	1450	18,5	180	110	60	30	40	43	1750	30
J 6-250	150	6"	76	300	200	80	5	11	15	1450	11	340	200	80	8	18	22	1750	22
J 6-251	150	6"	50	230	120	40	6	12	15	1450	7,5	270	180	80	9	15	20	1750	15
J 6-350	150	6"	37	300	180	80	19	30	33	1450	30	-	-	-	-	-	-	-	-
J 6-400	150	6"	50	380	200	80	18	36	38	1450	45	380	200	100	42	54	55	1750	75
J 8-300	200	8"	60	480	320	120	8	15	20	1450	22	480	320	120	15	25	28,5	1750	45
J 8-305	200	8"	76	420	200	100	5	13	17	1450	18,5	480	200	100	10	20	27	1750	30
J 10-305	250	10"	76	600	400	200	6	15	18,5	1450	30	600	400	200	17	23,5	28	1750	45
J 6-350	150	6"	37	280	200	80	3	9	14	960	11	-	-	-	-	-	-	-	-
J 12-400	300	12"	70	1200	720	300	8	12	15	960	55	-	-	-	-	-	-	-	-

ST-R

Self-priming trash pumps

Self-priming trash pumps ideal for pumping liquids with large solids in suspension. They are used on purification plants and sewage systems where their maintenance friendly design, provides a completely safe, waste management solution.

- Rapid self-priming without foot valve. Once filled with water, the pump is automatically primed to a height of 7.5 m
- Total safety for operators. Being placed outside and above the liquid to be pumped, inspection and maintenance of the pump are made easier, with greatly reduced health and safety hazards for personnel
- Two vane semi-open impeller handling up to 3" (76 mm) solids
- Easy maintenance: back pull-out rotating assembly which can be removed without dismantling the pipes or pump casing

Electrically-driven pumps

Model	Ports		Solids mm	50 Hz				60 Hz											
	mm	in		Capacity m ³ /h			Head m	Speed rpm	Power kW	Capacity m ³ /h			Head m	Speed rpm	Power kW				
ST-R2	50	2"	38	32	20	10	5,5	7	8,5	1450	1,5	40	15	5	5	18	21,5	3450	2,2
ST-R3	80	3"	63	100	50	20	9	14	16	1450	5,5	100	50	20	16	20	23	1750	11
ST-R4	100	4"	76	160	100	50	11	16	19	1450	11	160	100	50	20	24	27	1750	18,5
ST-R6	150	6"	76	330	200	80	14	23	28	1450	30	290	200	70	7	13	17,5	1150	15
ST-R8	200	8"	76	440	300	100	5	12	17	950	18,5	540	300	200	6	19	22	1150	37



ST-R4E BASE



TITAN

Submersible drainage pumps

Submersible drainage pumps, ideal for pumping liquids with solids in suspension, in civil and industrial plants.

- Cooling jacket to allow the motor to run in an optimal way even with low suction levels
- Greater efficiency of the motor
- Long life for components



X - AISI 304 stainless steel
K - AISI 316 stainless steel

Model	Port		Solids mm	Capacity m ³ /h (max)	Head m (max)	Speed rpm	Power kW
	mm	in					
TITAN 2XL 9-6	32	1¼"	2	9	6	2850	0,25
TITAN 2XL 9-7	32	1¼"	10	9	7	2850	0,25
TITAN 2XL 11-7	32	1¼"	20	11	7	2850	0,45
TITAN 2XL 14-9	32	1¼"	2	14	9	2850	0,45
TITAN 2XL 14-10	32	1¼"	10	14	10	2850	0,45
TITAN 2XL 15-12	40	1½"	10	15	12	2850	0,6
TITAN 2XL 18-15	40	1½"	10	18	15	2850	0,75
TITAN 2XL 12-10	50	2"	2	12	10	2850	0,4
TITAN 2XL 19-15	50	2"	7	19	15	2850	0,75
TITAN 2XL 24-17	50	2"	10	24	17	2850	1,1
TITAN 2XL 30-18	50	2"	10	30	18	2850	1,1
TITAN 2XL 36-19	50	2"	10	36	19	2850	1,8
TITAN 2XL 54-20	50	2"	10	54	20	2850	2,3
TITAN 2XL 72-21	75	3"	10	72	21	2850	3
TITAN 2XL 90-22	75	3"	10	90	22	2850	4,5
TITAN 2KL 9-7	32	1¼"	10	9	7	2850	0,25
TITAN 2KL 11-7	32	1¼"	20	11	7	2850	0,45
TITAN 2KL 14-10	32	1¼"	10	14	10	2850	0,45

BLACK

Submersible sewage pumps



Submersible centrifugal pumps, ideal for pumping liquids with solids in suspension, in civil and industrial sewage plants.

- Impeller types: open multi-channel, Vortex, with grinder, open and closed single-channel, closed dual-channel
- Wide range of materials: cast iron, cast iron/AISI 304 stainless steel, AISI 304 - 316 stainless steel

G - cast iron

Model	Port		Solids mm	Capacity m ³ /h (max)	Head m (max)	Speed rpm	Power kW
	mm	in					
BLACK 2G3 11-8	32	1¼"	12	11	8	2900	0,3
BLACK 2G3 13-9	32	1¼"	12	13	9	2900	0,37
BLACK 2G1 20-10	40	1½"	17	20	10	2900	0,6
BLACK 2G1 23-12	40	1½"	17	23	12	2900	0,75
BLACK 2G1 29-18	40	1½"	22	29	18	2900	1,1
BLACK 2G1 35-19	40	1½"	22	35	19	2900	1,5
BLACK 2G1 22-8	50	2"	17	22	8	2900	0,6
BLACK 2G1 27-10	50	2"	17	27	10	2900	0,75
BLACK 2G1 35-15	50	2"	22	35	15	2900	1,1
BLACK 2G1 40-17	50	2"	22	40	17	2900	1,5
BLACK 2G3 8-6	32	1¼"	20	8	6	2900	0,3
BLACK 2G3 9-6	32	1¼"	20	9	6	2900	0,37
BLACK 2G1 12-8	40	1½"	30	12	8	2900	0,6
BLACK 2G1 15-10	40	1½"	30	15	10	2900	0,75
BLACK 2G1 18-6	50	2"	40	18	6	2900	0,6
BLACK 2G1 24-6	50	2"	40	24	6	2900	0,75
BLACK 2G1 31-12	50	2"	40	31	12	2900	1,1
BLACK 2G1 28-11	50	2"	50	28	11	2900	1,1
BLACK 2G1 32-11	50	2"	50	32	11	2900	1,5
BLACK 2G1 36-15	50	2"	40	36	15	2900	1,5
BLACK 2G1 45-18	65	2½"	40	45	18	2900	1,5
BLACK 2G1 60-22	65	2½"	40	60	22	2900	2,2
BLACK 2G1 72-18	80	3"	45	72	18	2900	3
BLACK 2G1 90-22	80	3"	45	90	22	2900	4,1
BLACK 2G1 130-32 T	80	3"	55	130	32	2900	7,5
BLACK 2G1 13-16 CUT	32	1¼"	6	13	16	2900	0,9
BLACK 2G1 14-18 CUT	32	1¼"	6	14	18	2900	1,1
BLACK 4G1 82-12	80	3"	75	82	12	1450	1,5
BLACK 4G1 84-13	80	3"	75	84	13	1450	2,2
BLACK 4G1 96-15	80	3"	75	96	15	1450	3
BLACK 4G1 88-10	100	4"	85	88	10	1450	1,5
BLACK 4G1 93-12	100	4"	85	93	12	1450	2,2
BLACK 4G1 101-13	100	4"	85	101	13	1450	3
BLACK 4G1 74-8	80	3"	80	74	8	1450	1,5
BLACK 4G1 81-9	80	3"	80	81	9	1450	2,2
BLACK 4G1 88-11	80	3"	80	88	11	1450	3
BLACK 4G1 84-7	100	4"	90	84	7	1450	1,5
BLACK 4G1 95-8	100	4"	90	95	8	1450	2,2
BLACK 4G1 102-10	100	4"	90	102	10	1450	3
BLACK 4G1 155-14 T	100	4"	90	115	14	1450	4
BLACK 4G1 180-16 T	100	4"	90	180	16	1450	5,5



F - cast iron / AISI 304 stainless steel

Model	Port		Solids mm	Capacity m ³ /h (max)	Head m (max)	Speed rpm	Power kW
	mm	in					
BLACK 2F4 12-7	40	1½"	30	12	7	2900	0,5
BLACK 2F4 16-8	40	1½"	35	16	8	2900	0,6
BLACK 2F3 27-8	50	2"	45	27	8	2900	0,37
BLACK 2F3 30-9	50	2"	45	30	9	2900	0,55
BLACK 2F3 39-11	50	2"	45	39	11	2900	0,75
BLACK 2F3 42-13	50	2"	45	42	13	2900	1,1
BLACK 2F3 45-15	50	2"	45	45	15	2900	1,5
BLACK 2F4 24-9	50	2"	50	24	9	2900	0,75
BLACK 2F4 27-11	50	2"	50	27	11	2900	1,1
BLACK 2F4 30-13	50	2"	50	30	13	2900	1,5
BLACK 2F4 72-21	80	3"	50	72	21	2900	2,3
BLACK 2F4 82-27	80	3"	50	82	27	2900	3
BLACK 2F4 97-31	80	3"	50	97	31	2900	4,5
BLACK 2F4 75-21	80	3"	50	75	21	2900	2,3
BLACK 2F4 81-27	80	3"	50	81	27	2900	3
BLACK 2F4 96-31	80	3"	50	96	31	2900	4,5
BLACK 2F4 30-12	50	2"	50	30	12	2900	0,75
BLACK 2F4 36-15	50	2"	50	36	15	2900	1,1
BLACK 2F4 42-16	50	2"	50	42	16	2900	1,5
BLACK 2F4 12-22 CUT	40	1½"	-	12	22	2900	1,1
BLACK 2F4 15-19 CUT	50	2"	-	15	19	2900	1,1
BLACK 2F4 20-21 CUT	50	2"	-	20	21	2900	1,5
BLACK 2F4 21-24 CUT	50	2"	-	21	24	2900	2,3

X - AISI 304 stainless steel

K - AISI 316 stainless steel

Model	Port		Solids mm	Capacity m ³ /h (max)	Head m (max)	Speed rpm	Power kW
	mm	in					
BLACK 2X4 16-9	40	1½"	40	16	9	2900	0,6
BLACK 2X4 24-11	50	2"	50	24	11	2900	0,75
BLACK 2X4 26-13	50	2"	50	26	13	2900	1,1
BLACK 2X4 27-14	50	2"	50	27	14	2900	1,5
BLACK 2X4 30-10	65	2½"	60	30	10	2900	1,1
BLACK 2X4 42-12	65	2½"	60	42	12	2900	1,5
BLACK 2X4 54-13	80	3"	80	54	13	2900	2,3
BLACK 2X4 65-16	80	3"	80	65	16	2900	3
BLACK 2X4 39-15	50	2"	60	39	15	2900	1,5
BLACK 2X4 30-12	50	2"	50	30	12	2900	0,75
BLACK 2X4 36-15	50	2"	50	36	15	2900	1,1
BLACK 2X4 42-16	50	2"	50	42	16	2900	1,5
BLACK 2K1 14-11	50	2"	30	14	11	2900	0,6
BLACK 2K1 24-11	50	2"	50	24	11	2900	0,75
BLACK 2K1 26-13	50	2"	50	26	13	2900	1,1



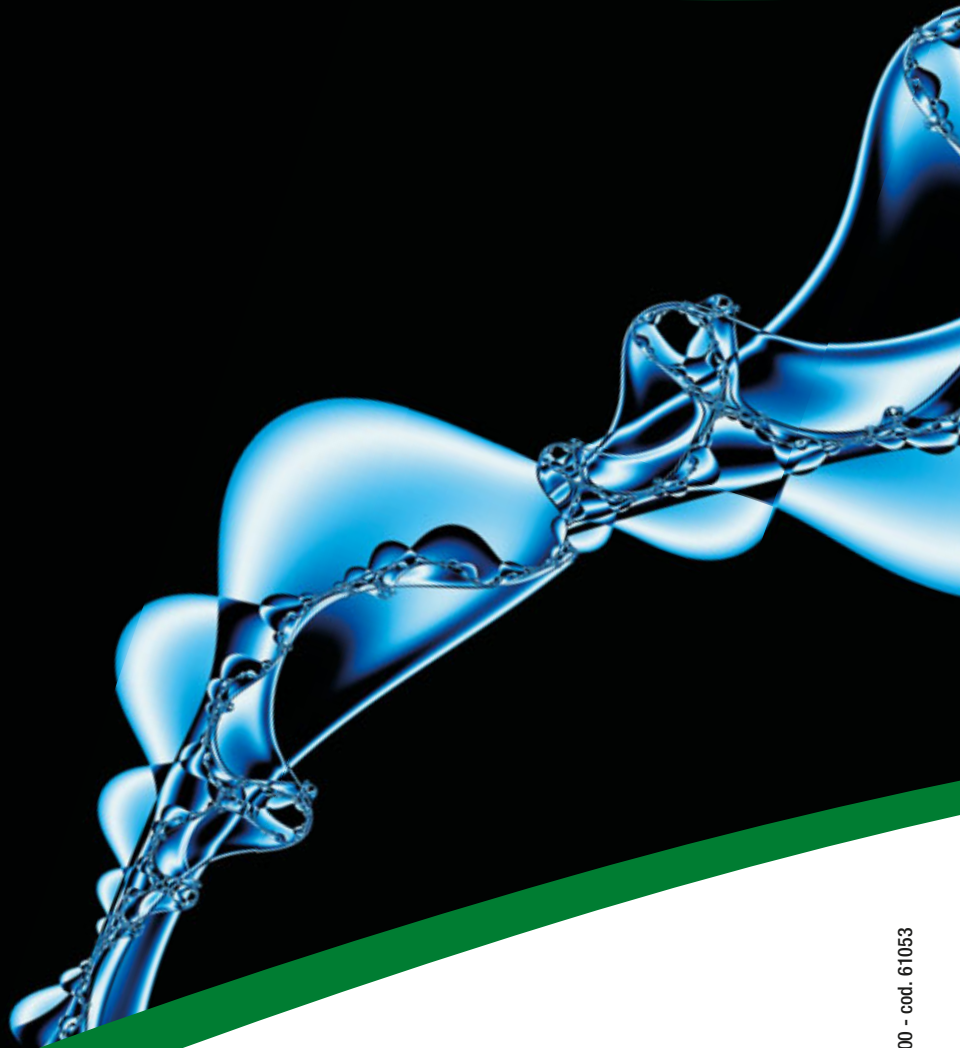


variscopspa.com

VARISCO S.r.l.

Terza Strada, 9 - Z.I. Nord
35129 PADOVA - Italy
Tel. +39 049 82 94 111
Fax +39 049 80 76 762
export.varisco@it.atlascopco.com

EN ISO 9001 : 2008
Reg. No. 44 100 091767



Distributor